

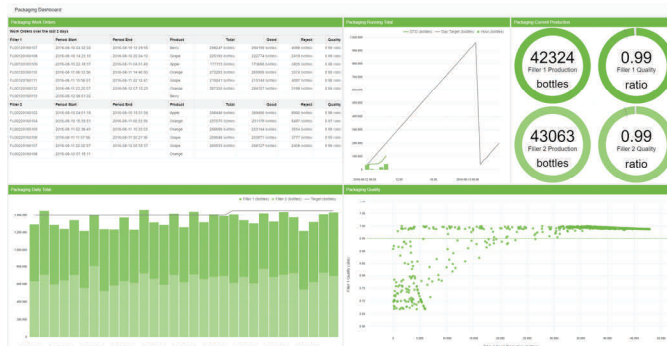
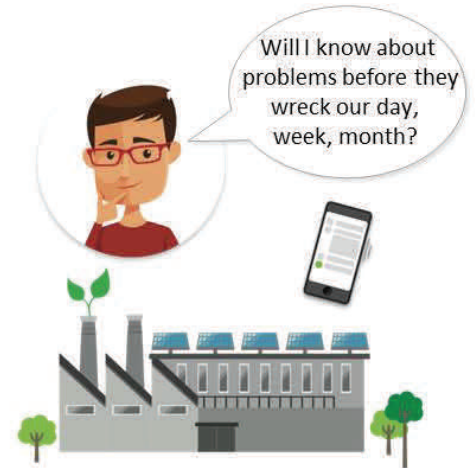
FLOW DELIVERS ACCURATE, TIMELY INDUSTRIAL OPERATIONS INFORMATION

So you can do something about problems, **FAST**

Flow is a flexible decision support software tool for industrial reporting & operational analysis that doesn't break the bank to acquire & implement.

Flow is focused on fast results generated through product configuration, not programming, scripting, or customizations. Flow uses your existing digital data sources such as control systems, process historians, databases. Flow joins digital data with manual data entry with ease.

Results are delivered to your desk, laptop, tablet, and smart phone in formats that encourage interaction with drill down into the meaning behind the results.



Are you **frustrated** with the work required to take data outputs from varied systems and **manually** pull them together in **spreadsheets** to get your information?

What if you could have this automatically? Anywhere...

Do you know you have **digital data**, but don't know how to automatically pull it into your information systems and **combine** it with **manually entered data**?

For 21 years Software Toolbox has helped users access their **digital data**, deliver it to other systems, and make sense of it. We live in the world of automation techno-jargon, but we are also business people focused on process, metrics, results.

Using Flow and our other products, Software Toolbox knows how to tap your data sources, and deliver the information you want without huge budgets and being tortured by your board or management!



OEE REJECT water consumption **QUALITY** ISO
 RATIO PRODUCTION ENVIRONMENTAL
 energy consumption DOWNTIME COMPLIANCE

HAVE YOU CONSIDERED?

When something is wrong in your process, **how long** does it take for you to know?

Do you know your **input costs, including utilities** such as power, water, gas, steam?

Do you know **which production line, product line, SKU, batch, or work order** is using more utilities and thus **costs more to manufacture**?

Do you know **which shift** operates most **effectively**, by your measure of effectiveness?

Could you **quickly relate other metrics to production output** or types such as Environmental Health & Safety, HR, Sustainability, Labor Costs, Efficiency, Plan Adherence?

Do you know if or how **product quality varies with line utilization** or other **production measures**?

Are you frustrated knowing you have **digital data** in your facility but don't know how to get it into your reports?

Are you **confident** your current reports are **accurate**?

If someone changes a value in your reports now, **do you know who did it**?

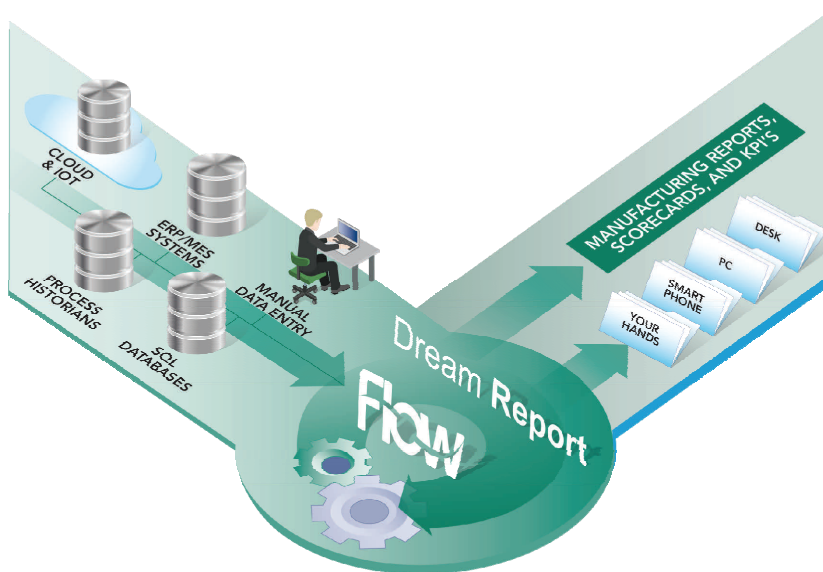
Is the process of **digital transformation** frustrating you?

FLEXIBLE SOURCES, OUTPUTS & REPORTING PERFORMANCE

Configuration Not Programming Encourages Self-Service, Breaks Bottlenecks

Flow connects to **multiple data sources** to **retrieve and aggregate, and relate data**. The results of this retrieval are stored, versioned, and user revision audit tracked in the Flow Information Platform's open SQL database. **Manual data entry** is entered into that same database using spreadsheet like browser based user interface, with accountability on those entering the manual data.

Measures are reporting points-of-interest which are easily configured in the Flow architecture. They **automatically** retrieve and aggregate data from your underlying data stores.



Further aggregations and KPI calculations are configured to reuse this information, thus reducing the retrieval load on the underlying data sources when reports and dashboards are delivered or served. This greatly enhances the performance of the reporting and visualization layer, making for a greatly improved user experience.

Calculations, manual data entry, limits, reports and forms are configured in a drag 'n drop manner.

With its simple configuration environment, Flow promises an ease of use that even business users will adopt, moving the system ownership to your end users and **lowering your total cost of ownership**.

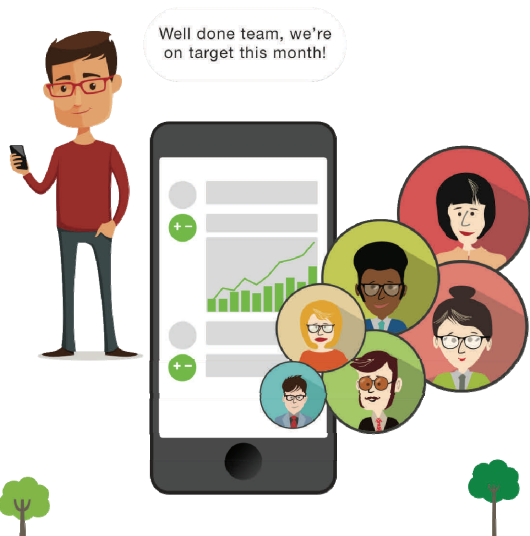
COLLABORATION

Flow app embraces communication!

The Flow app extends the Information Platform, allowing information to be sent automatically to you and your colleagues in the form of messages. Messages can include reports, dashboards and KPI scorecards. You can only manage what you know about, so get the Flow app and let Flowbot keep you in the loop with information as it happens or periodically.

Communicate with your colleagues in message channels based on departments, organizational structures, or even projects.

If you manage more than one facility, receive information from multiple Flow Systems and talk with all your teams, all from your mobile device!



INTERESTED IN FLOW?

Would you like to learn more about **Flow** or arrange a demo?

Contact

John Weber or Win Worrall at Software Toolbox
+1 888 665 3678 (US/Canada), +1 704 849 2773 Global
flow@softwaretoolbox.com
www.flow-software.com