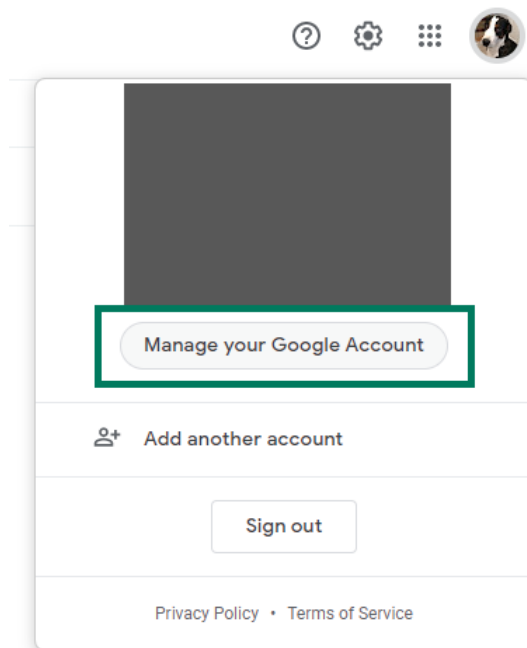
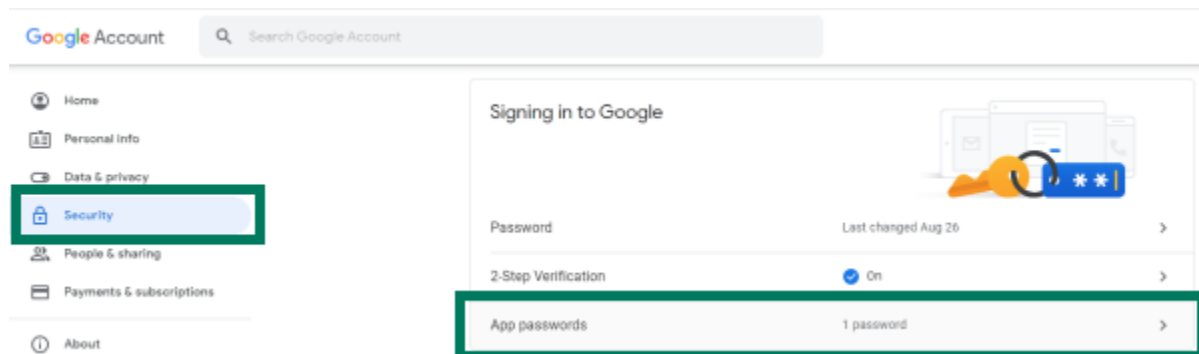


Using Google's SMTP mail server for outgoing emails

1. To use Google's SMTP server for outbound emails, you'll need to use the following settings in your application:
 - a. The SMTP server is: smtp.gmail.com
 - b. SSL/TLS encryption has to be enabled
 - i. For SSL, the port is 465
 - ii. For TLS, the port is 587
 - c. Username will be your Google email address.
 - d. Password needs to be a special generated App Password from your Google account (keep reading for details).
2. Due to 2 Factor Authentication, most users will need to use an App Password from Google to allow an application like OPC Router or OmniServer to use the SMTP server for outbound email notifications.
3. As such, the user will need to go into their Google profile to generate an App Password specifically for use with our solutions.
4. To do so, while signed into your Google account, click on your profile icon (as shown below) and click the "Manage your Google account" button (also as shown below). **Note that you may receive a 2FA authentication request or be required to re-enter your account password to allow you to access this information.**



- Then you need to go to the “Security” section (as shown below) and scroll down to the “Signing in to Google” section. Click the “App Passwords” link (also shown below).




- Select the Google app that the password is to be used for (in our case, Mail) and the device where it will be used (in our case, Windows Computer, since that is where the Software Toolbox software will be installed). Then click the “Generate” button.

← App passwords

App passwords let you sign in to your Google Account from apps on devices that don't support 2-Step Verification. You'll only need to enter it once so you don't need to remember it. [Learn more](#)

Your app passwords

| Name | Created | Last used | |
|-----------------------------|---------|-----------|---|
| Mail on my Windows Computer | Sep 10 | Sep 10 |  |

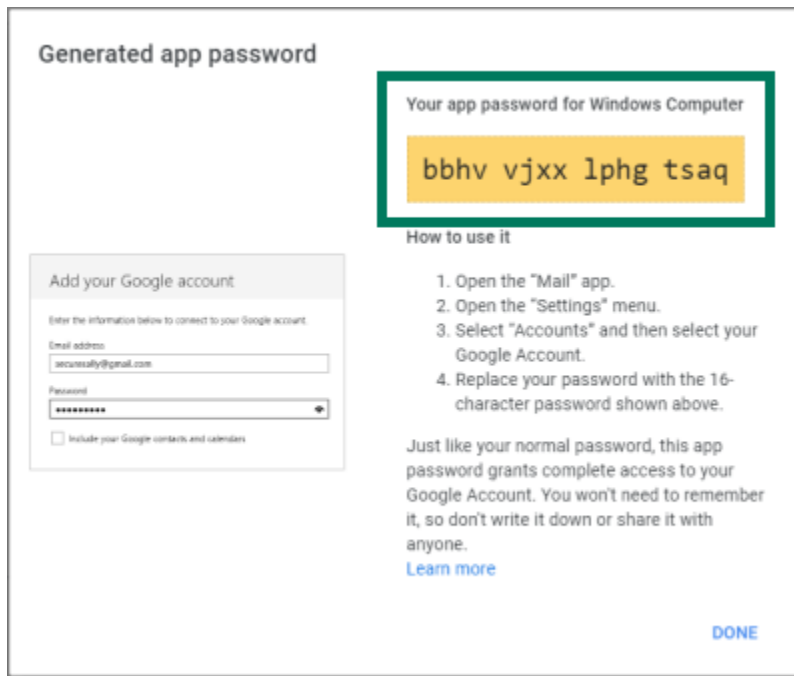
Select the app and device you want to generate the app password for.

Mail ▼ Windows Computer ▼

GENERATE



7. Use the generated App Password as the password in your application along with your Google email address for the username.



8. Here is an example configuring the OmniServer Email plug-in available in OmniServer Professional Edition to use the Google SMTP mail server. The generated App Password is used in the highlighted "Password" field instead of your log-in password for Gmail.

