

GUIDE

# OmniServer Hardware Licensing

TRANSFERRING EXISTING SOFTWARE LICENSES TO  
HARDWARE DONGLES

Our mission is to provide you with the right software package to solve your industrial operation challenges.



# Introduction

The purpose of this guide is to cover the process involved when moving an existing software-based OmniServer License to a physical dongle.

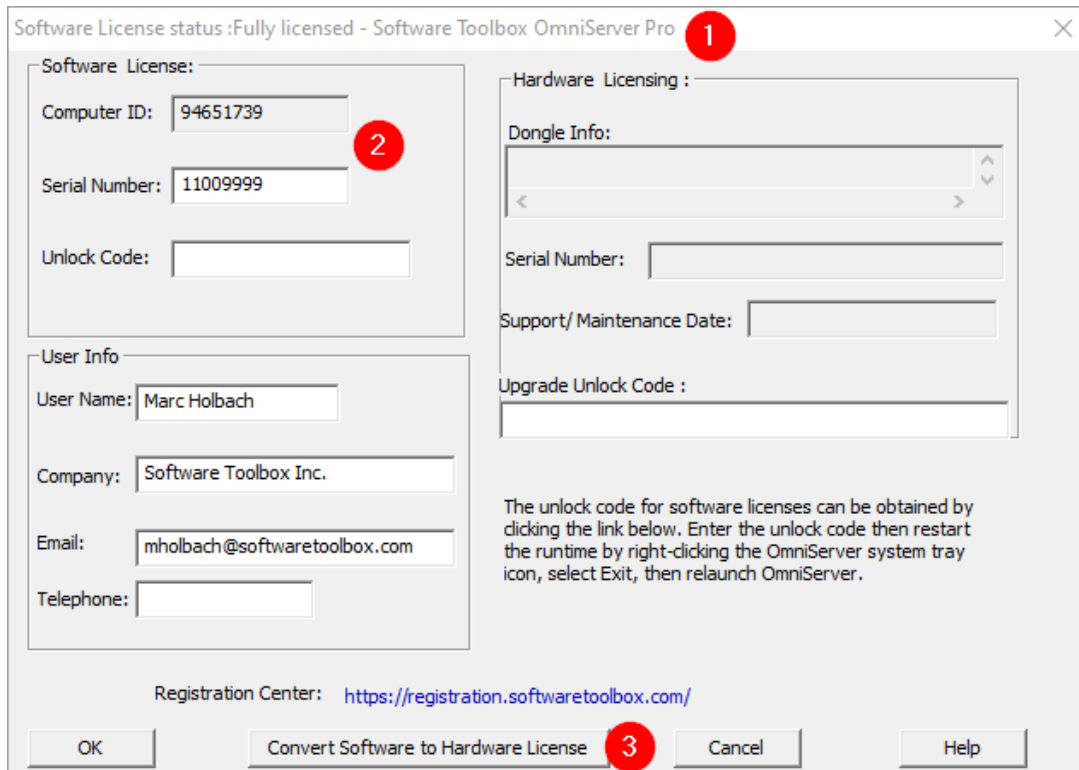
In cases where a physical dongle was purchased with a license pre-loaded – this guide does not need to be followed; It is specifically for situations where a system has a pre-existing software-based license that is being converted to a hardware licensing dongle.

This guide makes several assumptions have been met:

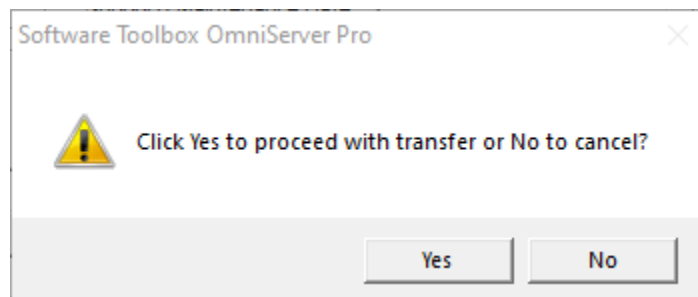
1. An OmniServer version with Hardware key support is installed and running (v3.2.0.3 or newer – [current version of OmniServer available here](#)).
2. That OmniServer is currently fully licensed with a software license.
3. A Software Toolbox formatted USB dongle has been delivered – this will be the dongle that the software license is transferred to. (**NOTE:** A special USB hardware dongle is required – standard USB storage dongles are not compatible)
  - a. Need a hardware dongle? [Click here to request a quote](#).

## Steps to Transfer OmniServer Software License

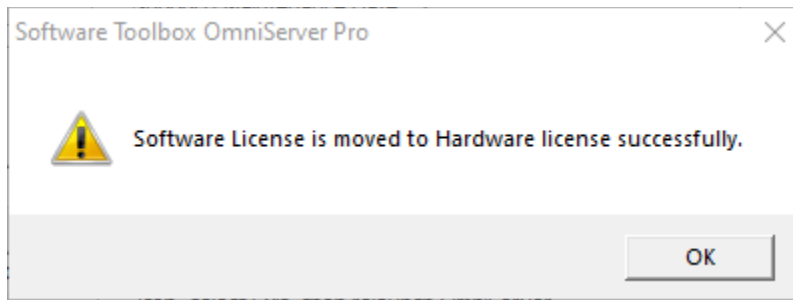
1. Connect the USB Dongle to the computer running OmniServer.
2. Open the OmniServer Configuration and navigate to **Help > Registration Code**.
3. Confirm that the title bar shows that OmniServer is fully licensed, and that it is using a Software License (1). Make note of the Computer ID and serial number listed (2) and then use the “Convert Software to Hardware License” button to begin the transfer process (3).



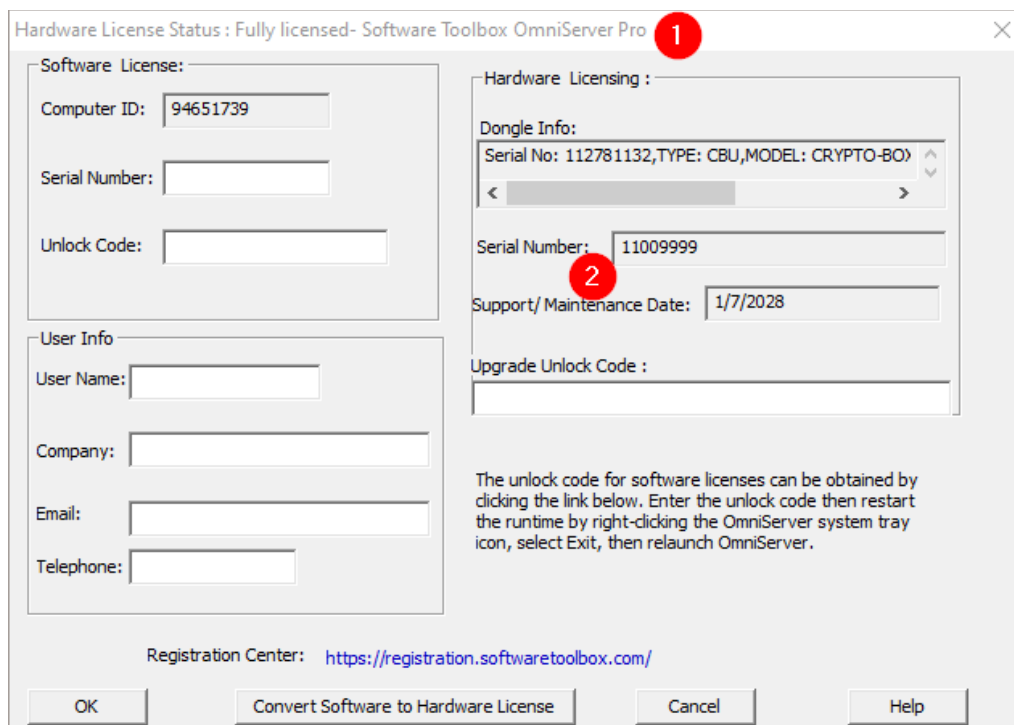
4. Click “Yes” to proceed with the transfer:



5. A dialog will confirm that the license transfer was successful:



6. Restart the OmniServer and check the Registration Code window. Validate that the title bar shows that the product is fully licensed and using a Hardware key (1), and confirm that the Support/Maintenance and Serial number information shown under the Hardware Licensing section is correct (2):



## Have questions? Just ask us!

This document is not intended to be an all-inclusive guide on licensing OmniServer. More details on the other aspects of licensing OmniServer are covered in detail in the OmniServer help file. Please don't hesitate to send us any questions you may have related licensing OmniServer.

[Click here to send us your questions](#). We look forward to helping you. Or contact us using one of the methods below:

### **Phone (Business hours: Mon - Fri, 8 AM - 5 PM, Eastern)**

Sales/Ordering/Pre-sales Technical Support: 1-888-665-3678 Toll free / 1-704-849-2773

Post-sales technical support: 1-704-849-2773

### **Email:**

Submit an inquiry via our support portal - <http://support.softwaretoolbox.com>

Direct Email – [support@softwaretoolbox.com](mailto:support@softwaretoolbox.com)



888 665 3678 TOLL FREE  
+1 704 849 2773 GLOBAL  
Charlotte, NC USA GLOBAL HQ  
[www.softwaretoolbox.com](http://www.softwaretoolbox.com) WEB

Our mission is to provide you with the right software package to solve your industrial operation challenges.